



## The 1920's, A Decade of Building

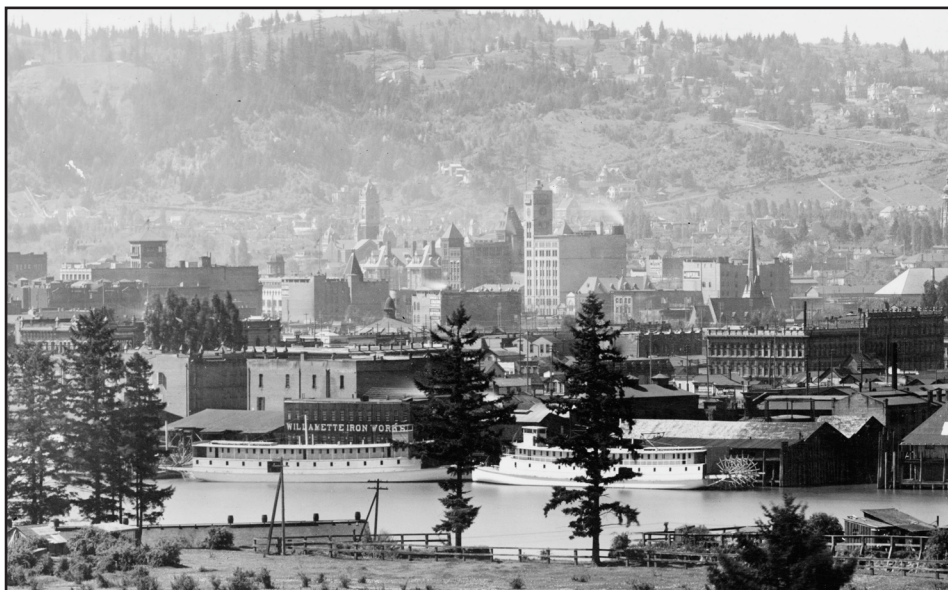
While NECA and IBEW Local 48 were cementing their partnership in the 1920's, Portland was experiencing a building boom. High rise buildings, amusement parks, churches, parking garages, factories, dozens of new schools and 25,000 new homes were constructed in and around Portland. All required skilled electricians to wire them.

During this boom, member numbers swelled. NECA and IBEW looked to strengthen their ties, both within their ranks, and between their organizations. In 1929, they jointly formed the "Portland Apprentice School." Eighteen apprentices signed up for the five-year program in the first year. Funded by labor and management, the school would become the Metro Training Center in 1963, before finally developing into the NECA/IBEW Electrical Training Center in 1998.

Over the years, there have been great times of prosperity when the economy boomed, followed by lean years during recessions and the depression in the 30's. Always, the solid skills of the union electricians and the sharp pencils of the contractors preparing bids made for real recoveries. It's thanks to the shared past that NECA/IBEW Local 48 is able to use that experience to help continually find new job opportunities. It is also this partnership that has created our state-of-the-art training facility, which has graduated skilled electricians, proficient in the latest practices and skilled with cutting edge technology.

As building booms continue to come and go, NECA/IBEW Local 48 will continue to adapt and advance to ensure another trailblazing 100 years.

***It's thanks to our shared past that NECA/IBEW Local 48 is able to use that experience to help us continually find new job opportunities.***



Portland, OR 1923

## Portland's Bridges



Tilikum Crossing — Portland, OR 2014

The 1920's brought flapper girls, jazz music, penicillin and the opening of the Burnside Bridge.

The Burnside Bridge began operations on May 28, 1926, first allowing only cars, streetcars and buses before adding electric trolleys in the 1930's. This bridge is one of Portland's best known landmarks, and is a part of history for many of our members as well. Continuing the tradition of shaping Portland's skyline, NECA/IBEW Local 48 members have been instrumental in the construction of the city's newest bridge, Tilikum Crossing.

Portland's first bridge built since 1973, the Tilikum Crossing is the nation's only multi-modal span, serving the MAX Orange Line light rail trains, the Portland Streetcar, buses, bicycles, pedestrians, and emergency vehicles only. No private vehicles will be allowed on this bridge!

Since the bridge carries the light rail and streetcar, its electrical capacity is vital. Our members ran the wiring, and installed the control boxes and lighting that makes the bridge operational. The Tilikum Crossing also has a modern LED lighting system that can change colors for special events or for different seasons of the year.

The bridge is scheduled to open

*continued on page 2...*





continued from page 1...

September 12, 2015, with the first public preview on August 9, 2015.

Throughout NECA/IBEW Local's 48 combined histories, their members have contributed to the buildings and structures that make Portland recognizable. They will continue to help shape our city's skyline for years to come.



## Member News

### A Day of Service

On July 11, IBEW Local 48 hosted a day of service for local communities in Portland. Members of IBEW Local 46, Seattle and Vancouver British Columbia Local 213 also joined.

Also participating were IBEW Local 48 internal groups: EWMC (electrical workers minority caucus), The VOC (volunteer organizing committee), and RENEW (reach-out engage new electrical workers).



All three of these groups represent the future of our organization. It is through their efforts that we are developing necessary leadership skills and building relationships in so many diverse communities throughout the Metro region. Over 40 people showed up in three different locations and donated approximately 200 hours of service, in just one day.

We realize that no one can do it alone. We are honored here at Local 48 to have such amazing volunteers. Join us in the future if you would like to donate some time doing good deeds in your community and meet some of these remarkable members of IBEW.

### Job Updates

*Tice Electric just finished a series of electric car charging stations called "Electric Avenue" at the World Trade Center.*

